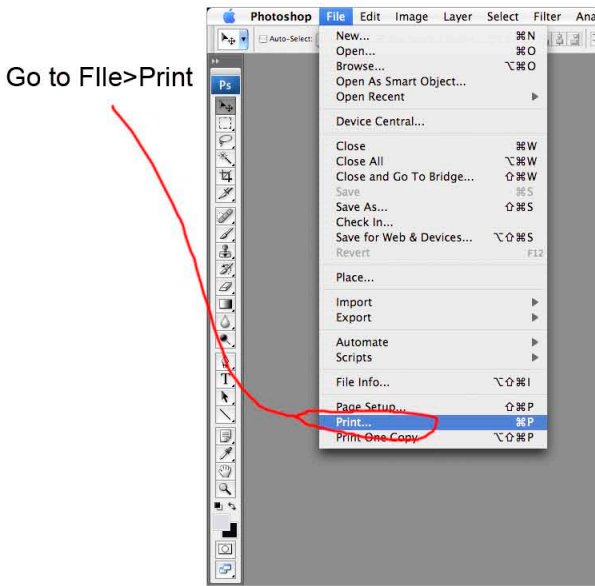
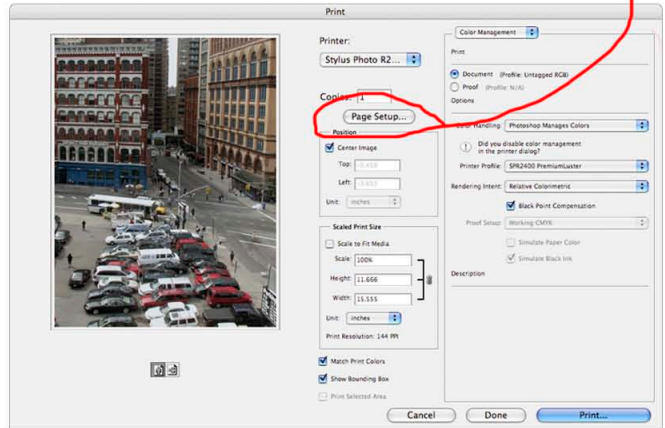


PRINTING TO THE EPSON R2400 pg.1



Go to File>Print

In the Print with Preview window, click on "Page Setup"



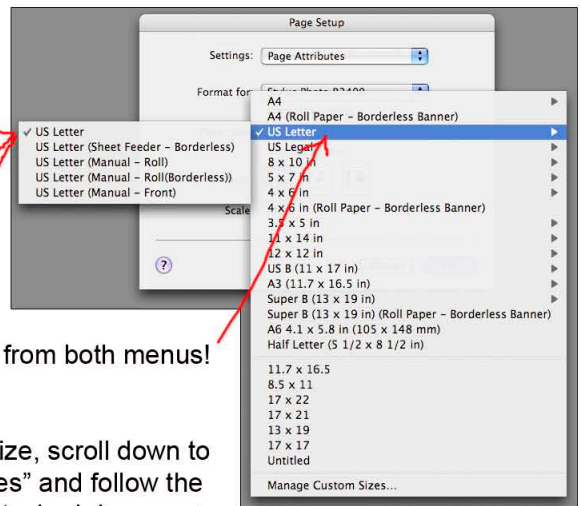
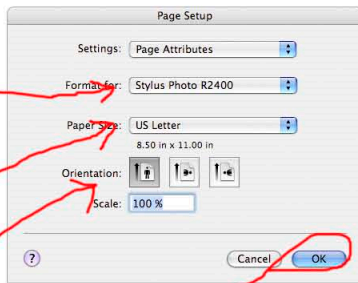
In Page Setup:

FIRST choose your printer!

SECOND choose your paper size

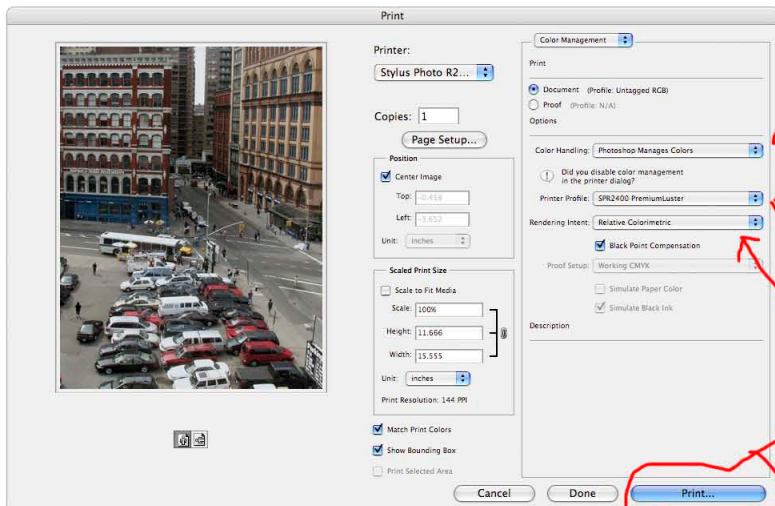
THIRD choose your orientation

FOURTH click OK



Choose paper size from both menus!

If you need to make a custom paper size, scroll down to "Manage Custom Sizes" and follow the attached document.



Once you are back in "Print" make sure that these settings are correct:

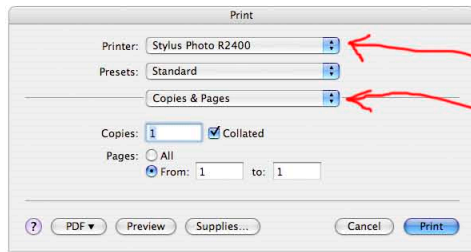
Color Handling: Photoshop Manages Colors

Printer Profile: Should be set to the paper type you are printing onto (ex. Ilford Pearl = IGSP_PEARL2400_PSPn.icc)

Rendering Intent: Relative Colormetric

Make sure your orientation is correct in the preview window, and then go ahead and press "Print"

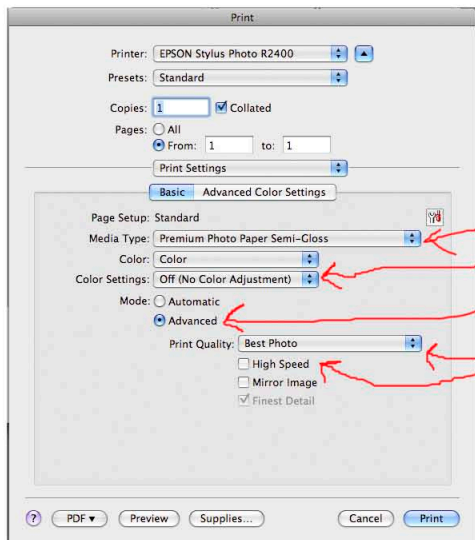
PRINTING THE THE EPSON R2400 pg.2



In the Print dialog box, make sure that you:

FIRST Select the printer you are using

SECOND Go to "Copies and Pages". Scroll down from there and select "Print Settings"



In Print Settings;

Choose your Media Type. If you are using Ilford Pearl, choose "Premium Photo Paper Semi-Gloss".

Choose COLOR Settings "Off"

Choose "Advanced" from the Mode section.

Choose "Best Photo" from the Print Quality drop down menu if you want photo quality prints.

Uncheck "High Speed"

Now you may (finally) press "Print"!

Troubleshooting:

If the printer runs out of ink (the red light is on constantly) ask a technician to change it for you.

If your print comes out magenta, somewhere along the way you have chosen the wrong setting. Go back through these instructions and check your settings.

If the settings are correct and it's still magenta, use the document "Eliminating Banding and Cleaning Heads" to clean the heads.

If you are getting lines (banding) through your print, make sure the "Print Quality" is set to "Best Photo". Also, make sure you have chosen the correct "Media Type" in this same dialog box. If these prove not to be the problem, then use the document "Eliminating Banding and Cleaning Heads" to clean the heads. These lines usually mean there is a piece of dust or dried ink stuck on the heads.